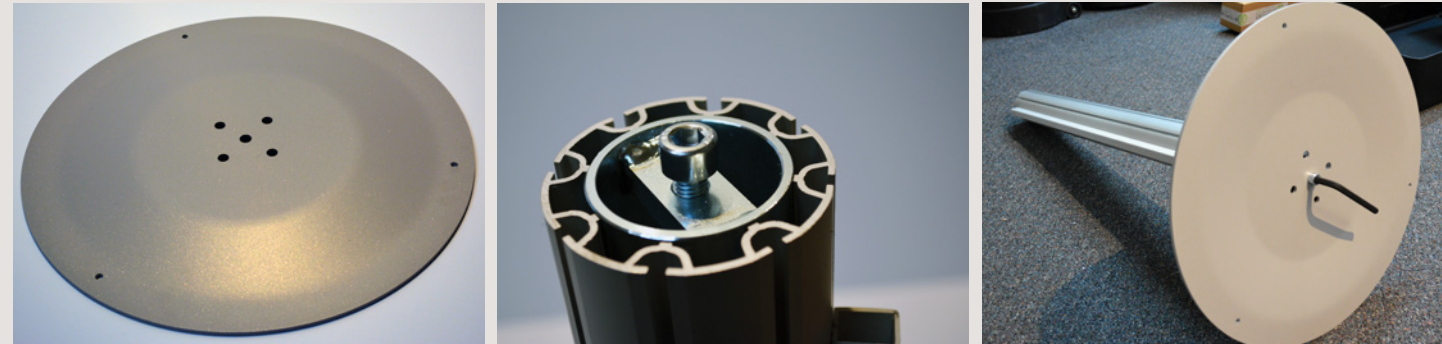
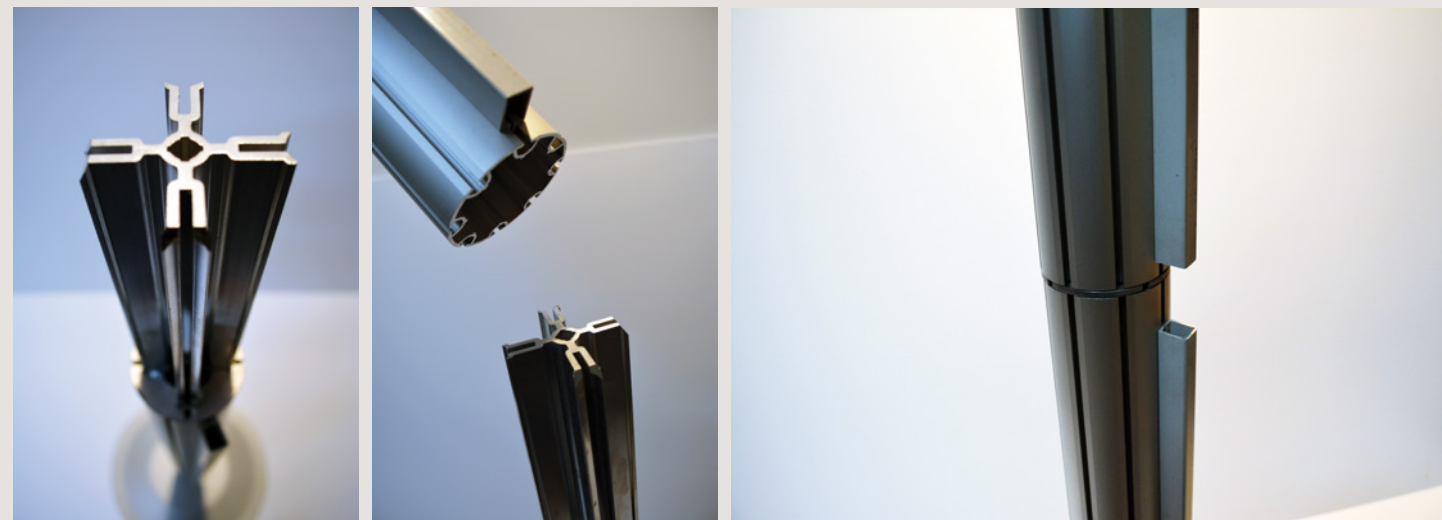


AUDIO/VISUAL DISPLAY MEDIA POST

ASSEMBLY INSTRUCTIONS



01 Attach the Bottom Post to the Base Plate. Use the screw from the Bottom Post to screw it into the baseplate using the large Hex Key provided.



02 Insert the Spigot into the Bottom Post and align the Cable-Way of the Top Post while placing it onto the Spigot.

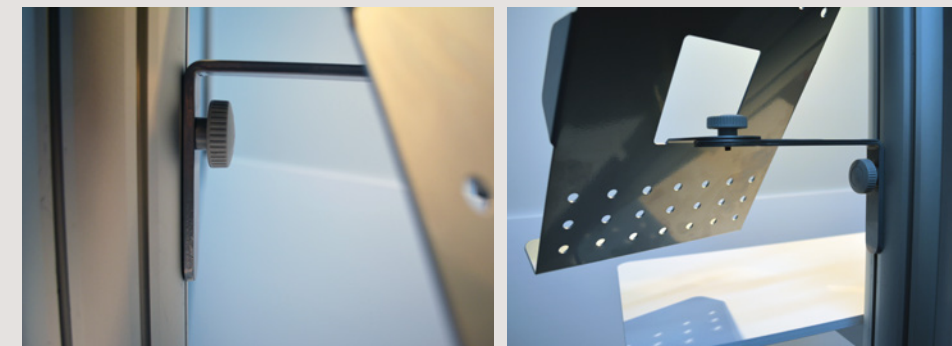


03 Use the provided Hammerhead Bolts to attach the Monitor Bracket at the desired height. Gently tighten the nuts using the provided wrench. Too much can warp the aluminum post or break the bolt. **IMPORTANT:** Ensure that a washer is used on both sides of the Monitor Bracket.

OPTIONAL ACCESSORIES



04 Insert and fasten the Shelf to your desired height using the Hex Key provided. One half turn Right to lock it into place. Do not over turn as this will break the internal lock.



05 Hand tighten the adjustable Brochure Holder to your desired position.



PARTS INCLUDED:

- 1 Base Plate
- 2 Posts
- 1 Spigot
- 1 Monitor Bracket
- Toolbox
- Media Shelf (Optional)
- Brochure Holder (Optional)