

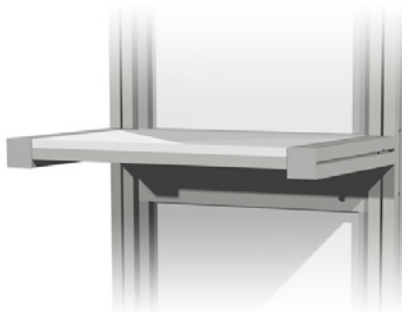


**A DISPLAY THAT  
CAN HOLD A  
LARGE MONITOR  
YET PACKS SMALLER  
THAN THE  
AVERAGE STAND.**

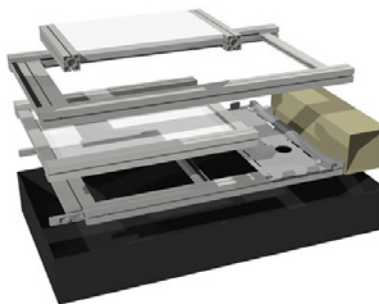
Looking for a monitor stand that can support your monitor along with your brand? Look no further, the Media Stand can accommodate a 32" to 55" flatscreen monitor. Add a single or double-sided graphic for enhanced branding or call to action. The Media Stand comes with a built in laptop shelf with the option to add side mount shelves or literature holders.

**FEATURES**

- Packs small & easy to transport
- Built-in laptop/keyboard shelf included
- Supports up to a 55" flatscreen monitor
- Single or double-sided graphics
- Multiple accessory attachments available

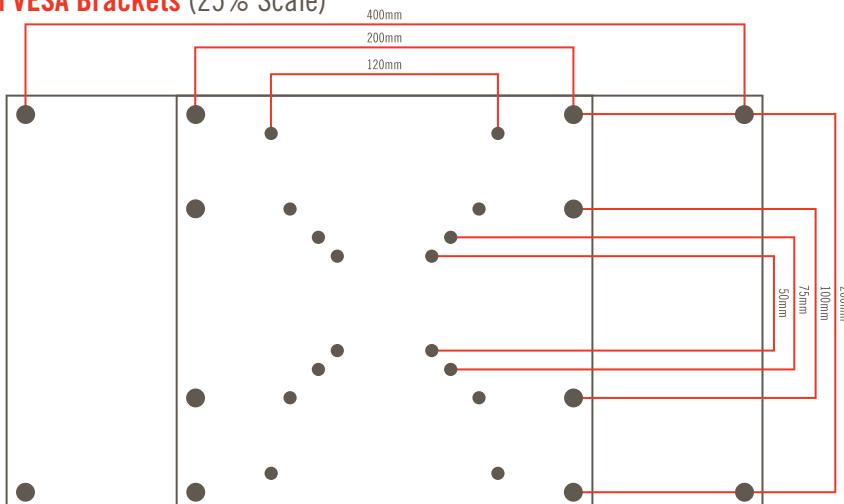


Media Stand includes a built in laptop/keyboard shelf



The unit dismantles into sections that conveniently packs within a compact shipping

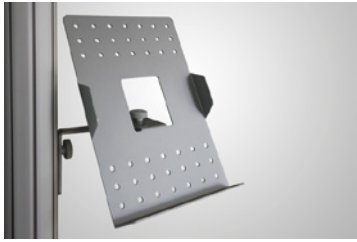
**Supported VESA Brackets (25% Scale)**



**View this product in our showroom.**  
Call or email us for more info and pricing.

## ACCESSORIES

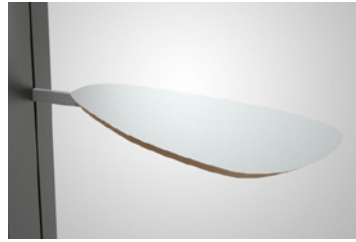
Enhance the functionality of the Media Stand by adding these optional accessories.



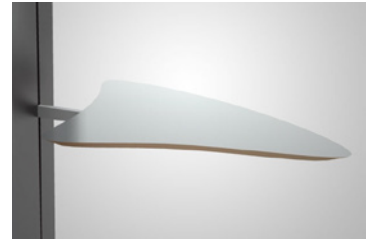
Literature Holder



Display Shelf



Display Shelf (Teardrop)



Display Shelf (Sharkfin)



Bag Holder

---

## SHIPPING CASE

Just tilt and go, this shipping case is constructed from rugged thermoformed polyethylene and features strong steel, rubber gripped handles and heavy duty built-in wheels. Case includes an 8" x 12" label area and sturdy 1.5" wide straps with buckles.



**Expo Case 39**

39"(w) x 19.25"(h) x 5.5"(d)